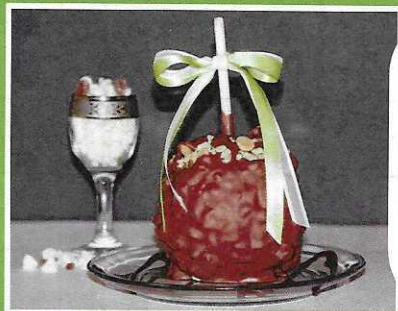




# GOURMET APPLES FUNDRAISER

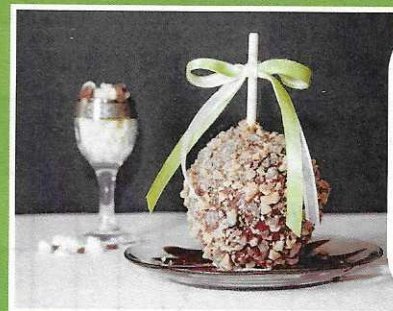
Our large Granny Smith Apples are smothered in our velvety sweet caramel, covered in premium chocolate and gourmet toppings. We use only gourmet toppings and personally hand-roll all of our apples to ensure maximum coverage. Our apples weigh approximately 1.5lbs and serve 8-10 people when sliced. Makes a unique gourmet dessert that is "sweet to the core"!

## ALL APPLES ARE ONLY \$14 EACH!



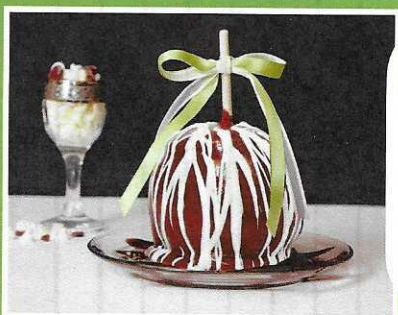
### A. AFTERSHOCK

It begins with an explosive sensation of caramel and then rolled in mounds of Krispies and peanut butter morsels. It is finally submerged in our creamy Swiss milk chocolate. Absolutely Delicious!!!



### D. HEAVENLY HEATH

Our Heath apple is defined by its incredible buttery flavor. It is dipped in caramel and Swiss chocolate and covered with chopped Heath bar pieces.



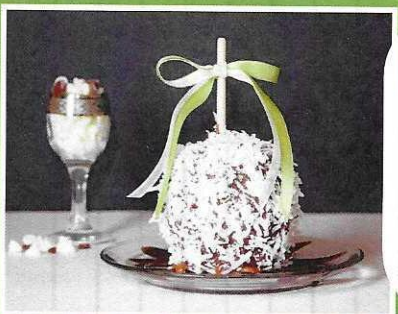
### B. CHOCOLATE DRIZZLE

Coated with caramel and dunked in rich Swiss milk chocolate. We finish it with a white chocolate cascading drizzle. Pure simplicity!



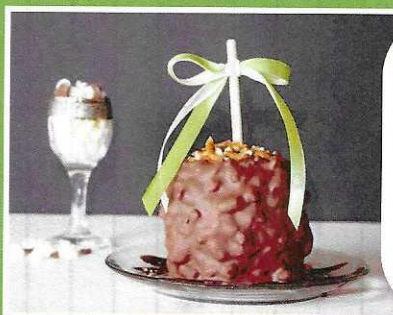
### E. OREO AVALANCHE

Oreo on an apple? You bet we do!! Dipped in caramel and Swiss chocolate and then it is rolled in mounds of crushed Oreo cookie pieces. A pure chocolate explosion!



### C. CHOCOLATE SNOWBALL

If you love coconut and chocolate this is a MUST TRY! Dipped in caramel and Swiss milk chocolate. It's then covered in our sweet and crunchy coconut.



### F. PRETZEL APPLE

Dipped in our creamy caramel and then coated with pretzel pieces. We then submerge the apple in our Swiss milk chocolate. Sweet and Salty to the extreme!

#### ALLERGEN INFORMATION:

Our products are produced in a facility that uses toppings that contain peanuts, tree nuts, pecans and walnuts in addition to toppings that are manufactured in plants that also manufacture peanuts.

#### SELLING TIPS:

SMILE! Be courteous.

Share your sales goal and purpose for the fundraiser.

Contact everyone you know including family, friends & neighbors

Please collect payment at time of order

#### REMEMBER

**FOR YOUR OWN PERSONAL SAFETY, PLEASE DO NOT SELL  
DOOR-TO-DOOR TO STRANGERS!**





**(203) 208-5220**  
**1 Jefferson Road, Branford, CT**

Like Us on Facebook: [facebook.com/applesetcLLC](https://www.facebook.com/applesetcLLC)

Make checks payable to:

Name \_\_\_\_\_  
 Phone # \_\_\_\_\_  
 Teacher \_\_\_\_\_ Rm # \_\_\_\_\_  
 School / Group \_\_\_\_\_

**CUSTOMER NAME & PHONE NUMBER**

	AMOUNT PAID	TOTAL QUANTITY
1		
2		
3		
4		
5		
6		
7		
8		
9		
10		
11		
12		
13		
14		
15		
16		
17		
18		
19		
20		
<b>Grand Total</b>		

For Office Use Only:

CASH:	
CHECKS:	
TOTAL:	